

# Register and Save!

Offer includes  
**50% off**  
your next order  
of assorted  
tips + tip  
storage case.

## Save over \$50!

Visit [Waterpik.com/WelcomeWF](http://Waterpik.com/WelcomeWF)  
to watch How To video.

Register your product and receive over  
\$50 in savings.

[Waterpik.com/registration](http://Waterpik.com/registration)

## We'd Love to Hear from You!



Connect with Us  
@Waterpik



Call: 1-800-525-2774  
[www.waterpik.com](http://www.waterpik.com)

## Waterpik® 14 Day Challenge App

Make water flossing a habit! Try our new mobile App for the best  
water flossing experience.



waterpik®  
waterflosser

# Congratulations!

You are now on your way  
to better oral health!



### Register and Save

Register your product at [waterpik.com/registration](http://waterpik.com/registration) to receive over  
**\$50** in savings (includes **50%** off your next order of assorted tips + tip  
storage case).



### Write a Review

Creating innovative Waterpik® products that inspire better oral  
health is our passion. We invite you to leave a review by sharing your  
thoughts on the Aquarius® Water Flosser on [waterpik.com](http://waterpik.com) or the  
retailer's website.



### We're Here to Help

We hope you are loving your new Waterpik® Aquarius® Water Flosser.  
If for any reason you are not satisfied or have any product questions,  
please contact our fast and friendly Customer Service Team based in  
Fort Collins, Colorado. Waterpik® Aquarius® Water Flosser is backed  
by a 3-year manufacturer's warranty.

Call: 1-800-525-2774  
Monday-Friday  
7 am - 5 pm MST



Chat or E-mail  
[service@waterpik.com](mailto:service@waterpik.com)



**Quick Start  
Guide Inside!**

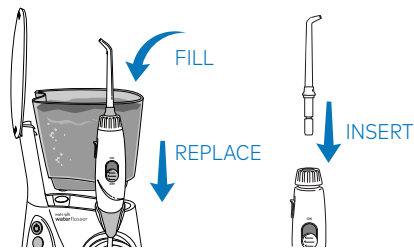


# Quick Start Guide

## PRIMING UNIT (FIRST TIME USE ONLY)

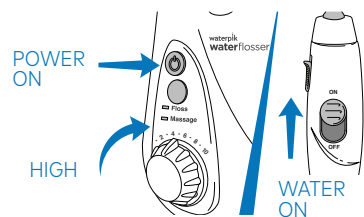
1

Fill reservoir with warm water and replace it firmly on the base. Insert tip firmly until it clicks into place.



2

Turn pressure to high, point tip into sink, turn power ON and water switch to ON until water flows. Turn power and water OFF.



## NEED HELP?

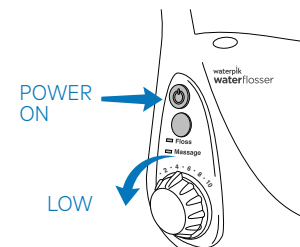
Visit [Waterpik.com/WelcomeWF](http://Waterpik.com/WelcomeWF)  
To watch a How To Video and find additional product support.

Call Us! 1-800-525-2774

## WATER FLOSS

3

With power OFF and water switch in OFF position, place tip in mouth. Turn power ON. Turn water switch to ON.



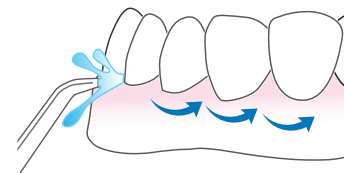
4

Lean over sink. Close lips enough to prevent splashing, while still allowing water to flow from mouth into sink.



5

Aim water at the gumline at a 90 degree angle. Follow the gumline and pause briefly between teeth.



**TO AVOID MESS: PLACE TIP  
IN YOUR MOUTH BEFORE  
TURNING WATER ON.**